



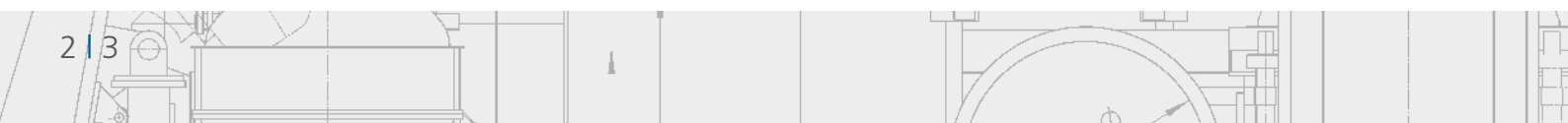
## WALTHER TROWAL

*We improve surfaces*

- MASS FINISHING EQUIPMENT
- MASS FINISHING MEDIA AND COMPOUNDS
- PROCESS WATER CLEANING AND RECYCLING
- SHOT BLAST EQUIPMENT
- COATING EQUIPMENT FOR SMALL, MASS-PRODUCED PARTS



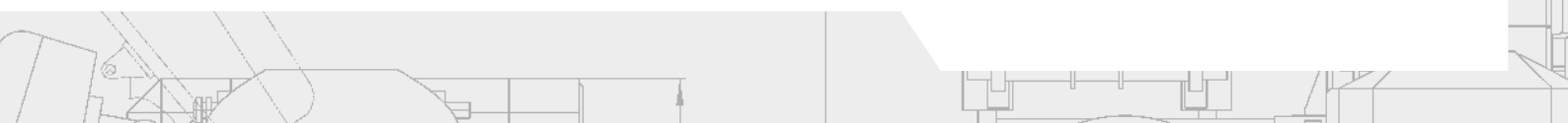
**AT WALTHER TROWAL  
YOU ALWAYS DEAL  
WITH COMPETENT PROFESSIONALS!**





## CONTENTS

About Walther Trowal Tradition – Made in Germany	04
Our customers and us – a tight-knit partnership	05
Mass Finishing Our experience makes the difference	06
Coating of small, mass-produced parts High temperature rotary drum coating equipment	08
Shot blasting Continuous feed shot blast equipment	09
Process water cleaning and recycling Our focus is on the environment	10
Customer support Comprehensive technical service	11







## ABOUT WALTHER TROWAL

### TECHNIQUE – MADE IN GERMANY

Walther Trowal has been building surface finishing equipment since 1931. In fact, Walther Trowal pioneered many groundbreaking developments in the field of mass finishing for our worldwide customers. Till today the name Walther Trowal stands world wide for innovation, high quality and reliability. And it is not surprising that in the industry the term “trowalizing” is used as synonym for mass finishing.

Besides specializing in the surface treatment of all kinds of work pieces with mass finishing or shot blasting methods and the coating of mass-produced, small parts, the company also focuses on cleaning and recycling the process water from a variety of industrial applications. In this field Trowal has developed many highly effective and economical solutions.

With our know-how that spans more than 85 years, we develop special solutions that are tailor-made to the requirements of our customers. With our global sales network we develop the optimum solution for your surface finishing needs, either as stand-alone machinery or fully automatic, linked systems, which can be integrated into your overall production process.

#### Customer requirements, e.g.

- Deburring
- Polishing
- Cleaning
- Coating
- etc.

#### Selection of the best finishing method

- Mass finishing
- Shot blasting
- Process water cleaning & recycling
- Coating of small parts

#### The optimum solution for the customer finishing needs

- The right equipment
- The best process
- Optimum support



## OUR CUSTOMERS AND US – A TIGHT-KNIT PARTNERSHIP

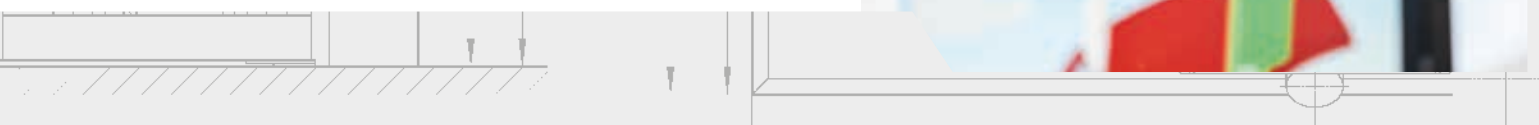
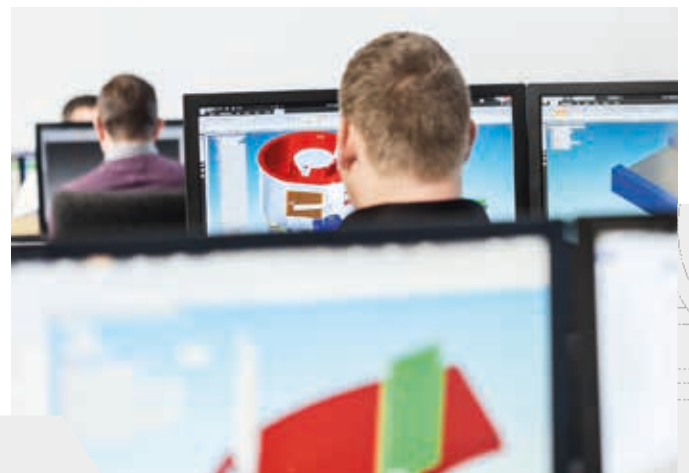
A close affiliation with our customers is as important for us as the quality of our products.

Right from the beginning of a project we focus on professional consultation and round the clock support.

This includes:

- Development of the best finishing process
- Engineering of specific customer requirements
- Processing trials in our test lab
- Trouble shooting, repair and maintenance service
- World wide service and support

Our process and service engineers stand ready to assist you at any time you encounter a finishing problem. The international salesteam supports your requests and needs.





## MASS FINISHING

### OUR EXPERIENCE MAKES THE DIFFERENCE

Mass finishing is a mechanical/chemical method for deburring, edge radiusing, smoothing, polishing, cleaning, degreasing and pickling of single as well as mass-produced work pieces.

The optimum combination of finishing machine, grinding or polishing media, compound and water is critical for the success of any mass finishing process. The media acts like many tiny wire brushes on the work pieces, which may consist of various forged, cast, stamped, cut or extruded metals, metal alloys, sintered metals, plastic and rubber.

Mass finishing methods can be used for a wide spectrum of work pieces, ranging from extremely small to very large parts, irrespective of their shape.

### THE TROWAL EQUIPMENT RANGE

Built on decades of experience our know-how helps us to determine the right combination of finishing machine, work pieces, media and compound to achieve the optimum results for our customers.

Walther Trowal can draw on a comprehensive portfolio of different machine types for handling the most challenging finishing tasks:

- Rotary vibrators
- Tub vibrators
- Centrifugal disk finishing machines
- Continuous feed vibratory systems
- Drag finishing systems





### **MEDIA AND COMPOUNDS**

“Trowalizing” is not just a specific surface treatment method but offers a wide spectrum of possibilities to finish and improve all kinds of work piece surfaces.

With the right combination of Trowal machine as well as Trowal media and compounds optimum finishing results are achieved.

### **GRINDING AND POLISHING MEDIA**

Walther Trowal offers a wide range of media for every conceivable finishing application.

Over a span of more than 85 years we developed a complete assortment of grinding and polishing media from different materials, in different shapes & sizes and, of course, with a variety of abrasive characteristics.

Whether for aggressive grinding or for achieving pre-plate finishes, Walther Trowal can supply the right media, all made in-house.

### **COMPOUNDS**

Compounds are required for general degreasing, cleaning, corrosion protection and for general support of the finishing process. They ensure that the media remains clean and maintains its abrasivity. The right compounds are indispensable for achieving optimum finishing results. Of course, we also produce all our compounds in-house and they are state of the art and according to the latest environmental requirements.





## COATING OF SMALL, MASS-PRODUCED PARTS

### THE HIGH TEMPERATURE ROTARY DRUM COATING PROCESS

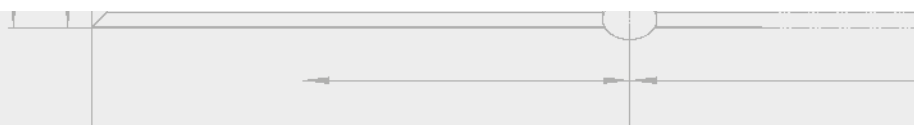
With the Rotamat system Walther Trowal offers an innovative system for coating of small parts.

The actual coating process takes place in a rotating drum encapsulated in a special housing. One or more guns are spraying the coating material (e.g. paint) onto the parts, which – due to the drum rotation – are continuously tumbling over each other. The parts can consist of different materials like metal, wood, plastic or rubber.

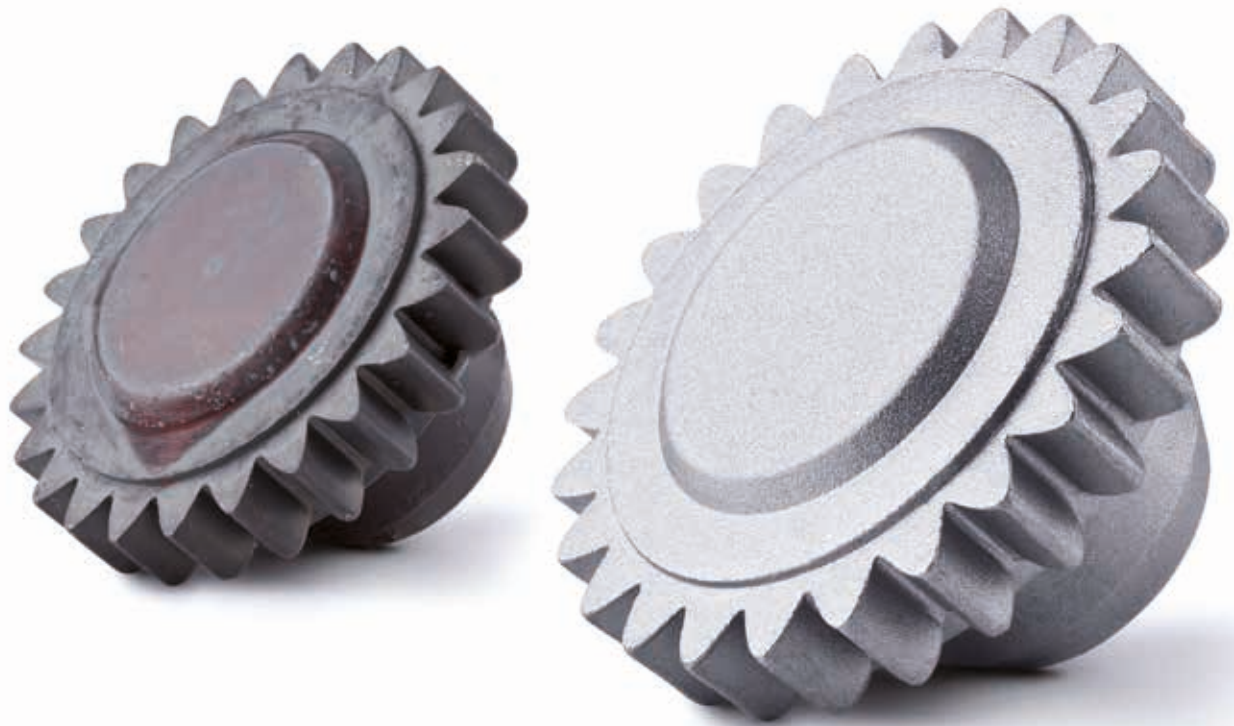
With the Rotamat coater the following applications are possible:

- Decorative coating
- Coatings to reduce friction
- Coating with a bonding material
- Coating for corrosion protection
- Coating for electrical insulation

Minimal overspray, absolutely repeatable coating results and ease of operation characterize the modular design of the Rotamat system. Over many years Walther Trowal has improved and optimized the unique Rotamat system, which can be supplied in different sizes







## SHOT BLASTING

### CONTINUOUS FEED SHOT BLAST EQUIPMENT

With the innovative troughed belt continuous THM shot blast machine Walther Trowal also set new standards.

Derived from the conventional tumblast principle, this unique system transports the work pieces at a constant speed through the machine. While gently tumbling over each other, and at the same time moving forward, the work pieces are evenly shot blasted from above.

Because of its surprisingly high capacity and ease of automation the THM is extremely cost efficient. Special work piece loading and unloading equipment allows fully automatic operation with very little operator involvement.

Coming in different versions and sizes, the THM machines can accommodate a wide spectrum of work piece dimensions and can be easily adapted to specific customer requirements.





## PROCESS WATER CLEANING AND RECYCLING

### OUR FOCUS IS ON THE ENVIRONMENT

Many production processes create wastewater. Before these liquids can be discharged to drain, they must undergo special cleaning treatments or must be disposed of as special waste at sometimes extremely high costs. With a special focus on the environment, in recent years Walther Trowal has perfected two systems that allow the customers to significantly reduce their wastewater handling costs.

### CENTRIFUGAL FILTERS

With a centrifugal force of up to 2,500 G solid particles are separated from the liquid phase and can be removed as stable, easily handable sludge. The cleaned water can be re-used in the respective production process.

- Process water from mass finishing processes
- Paint sludge from paint booths
- Wastewater from phosphating operations
- Coolants from machining operations
- Process water in wet blast operations
- Process water in lapping operations
- Process water in industrial washing machines

To determine the right process water cleaning method, our chemical lab carries out a comprehensive analysis of the respective liquids.

### FLOCCULATION SYSTEMS

By adding flocculants, the solid particles, along with other contaminants like metal in solution, grease and oil, are safely removed from the contaminated water. This allows discharging the cleaned water to drain in full compliance with the legal requirements.





## CUSTOMER SUPPORT

### COMPREHENSIVE TECHNICAL SERVICE

For Walther Trowal, as a modern, customer oriented company, service already starts before the sale, namely with personalized, professional consultation to assist you in the selection of the right finishing process and products that meet your requirements. Therefore Trowal has got a net of well trained and motivated representatives and subsidiaries in different continents and countries.

### PERFORMANCE GUARANTEES

To prevent costly machine down times and to ensure the continued functionality of your production equipment, our company offers a wide spectrum of extensive warranty services and performance guarantees.

### EXCHANGE PROGRAM

Whenever one of your machines must be repaired, we provide you with a completely overhauled work bowl in exchange for the defective one. This exchange bowl will be installed by one of our service engineers and becomes your property. For you this means a minimum of costly downtime.

### ORIGINAL SPARE PARTS

Surface finishing systems frequently are subject to extensive wear. The quality of our spare and wear parts and their quick availability is a guarantee to minimize the down times in your production.





**WAL THER**  
**TROWAL !**

**Walther Trowal GmbH & Co. KG**

Rheinische Straße 35-37 | D-42781 Haan

Tel. +49(0)2129-571-0 | Fax +49(0)2129-571-225

[info@walther-trowal.com](mailto:info@walther-trowal.com) | [www.walther-trowal.com](http://www.walther-trowal.com)